

Tamper Evident

Tamper evident labels are destructible labels that change in appearance when an attempt is made to remove them.

Tamper Indicating Solutions

The primary function of tamper evident or tamper-resistant labels is to indicate or prevent alterations by tampering and/or to indicate that an article is genuine and fit for use.



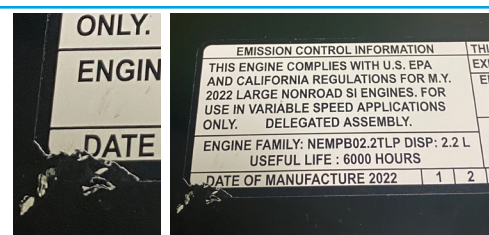
Tamper Evidence Solutions

If the label is breached or missing, it can be reasonably expected to provide visible evidence to suppliers, retailers or consumers that tampering has occurred.



Destructible Solutions

When label removal is attempted, the label will break into pieces and show signs of product tampering.



Temperature Indicating Solutions

Self-expiring indicators and self-destructing labels, or similar devices, that are designed to record the history of a product/pack temperature profile as it progresses through its life cycle.